

FLAME RETARDANT

EN 13501-1 / ASTM E84



SIBU | DESIGN

STRUCTURE-LINE *FLAME RETARDANT COLLECTION*



SL CRASHED Snow White matt FR
2600 x 1000 / NA 27600 / SA 27613



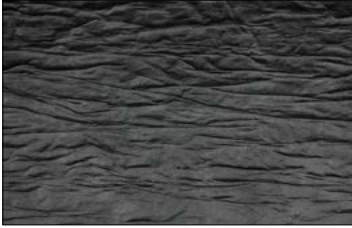
SL CRASHED Silver FR
2600 x 1000 / NA 27601 / SA 27614



SL CRASHED OLD Platin FR
2600 x 1000 / NA 27606 / SA 27615



SL CRASHED Smoke PF AR FR
2600 x 1000 / NA 27607 / SA 27616



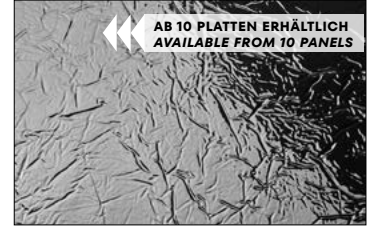
SL CRASHED CLASSY Black FR
2600 x 1000 / NA 27602 / SA 27617



SL CREPA Snow White matt FR
2600 x 1000 / NA 27603 / SA 27618



SL CREPA Gold FR
2600 x 1000 / NA 27604 / SA 27619



SL CREPA Silver FR
2600 x 1000 / NA 27605 / SA 27620



SL DAKOTA Snow White matt FR
2600 x 1000 / NA 27621 / SA 27636



SL DAKOTA CLASSY Black FR
2600 x 1000 / NA 27622 / SA 27637



SL DAKOTA Smoke PF AR FR
2600 x 1000 / NA 27623 / SA 27638



SL RATTAN 20 Snow White matt FR
2600 x 1000 / NA 27624 / SA 27639



SL RATTAN 20 Gold FR
2600 x 1000 / NA 27625 / SA 27640



SL RATTAN 20 Silver FR
2600 x 1000 / NA 27626 / SA 27641



SL OCEAN Anthracite AR FR
2600 x 1000 / NA 27487 / SA 27645



SL OCEAN Silver FR
2600 x 1000 / NA 26937 / SA 26939



SL OCEAN Hollywood FR
2600 x 1000 / NA 27596 / SA 27646



SL NOTCH Smoke PF AR FR
2600 x 1000 / NA 27609 / SA 27612



SL NOTCH Silver matt FR
2600 x 1000 / NA 27608 / SA 27611



SL NOTCH Gold matt FR
2600 x 1000 / NA 27599 / SA 27610



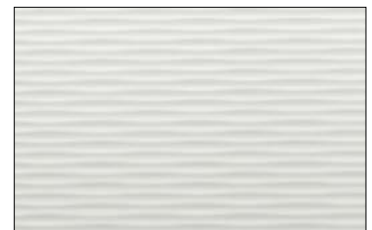
SL LAVA VINTAGE Copper FR
2600 x 1000 / NA 22430 / SA 22612



SL LAVA VINTAGE Silver FR
2600 x 1000 / NA 27352 / SA 27595



SL LAVA VINTAGE Gold FR
2600 x 1000 / NA 27353 / SA 27598



SL MOTION TWO Snow White matt FR
2600 x 1000 / NA 27627 / SA 27641

FLAME RETARDANT

EN 13501-1 / ASTM E84

SIBU DESIGN bietet schwerentflammbare Produkte mit einem Einsatzbereich von der Hotellerie bis hin zum Bühnenbau. Die FLAME RETARDANT Produkte (FR) erfüllen europäische (EN 13501-1) und amerikanische (ASTM E84) Brandschutznormen.

Trägermaterial: 1 mm HPVC weiß

Um ein B - s2 - d0 Brandverhalten zu erreichen, müssen die Produkte auf Untergründen mit Brandschutzklassifizierung A2 - s1, d0 nach EN 13501-1 verklebt werden. Bitte kontaktieren Sie uns bei jeglichen Fragen zum Thema „FLAME RETARDANT“.

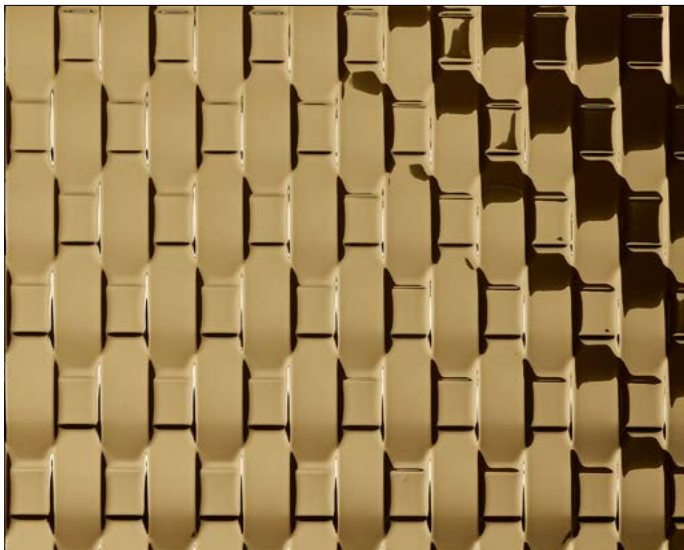
Alle angeführten Produkte sind ab 30 Stück erhältlich, gekennzeichneten Produkte sind bereits ab einer Stückzahl von 1 oder 10 Platten erhältlich!

SIBU DESIGN offers flame retardant products with an application range from the hotel industry to stage construction. The FLAME RETARDANT products (FR) meet European (EN 13501-1) and American (ASTM E84) fire safety standards.

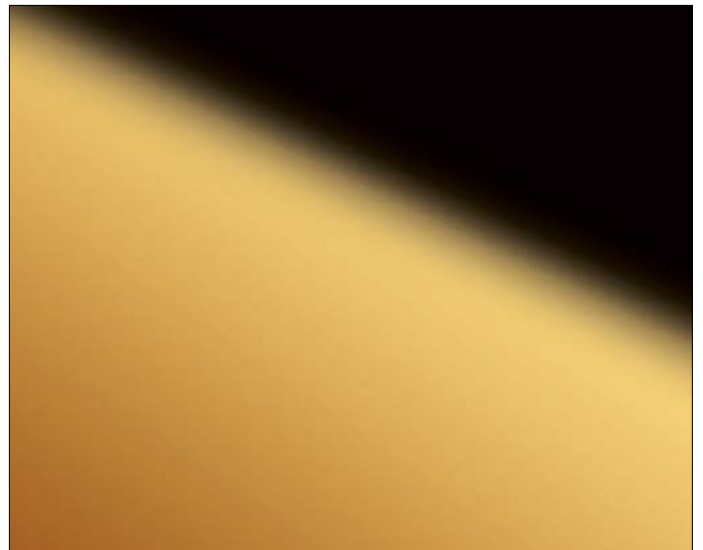
Carrier material: 1 mm HPVC white

To achieve a B - s2 - d0 fire performance, the products must be bonded to substrates with fire classification A2 - s1, d0 according to EN 13501-1. Please contact us if you have any questions about our „FLAME RETARDANT“ design panels.

All listed products are available from 30 pieces, marked products are already available from a quantity of 1 or 10 plates!

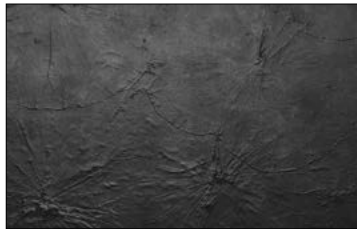


SL RATTAN 20 Gold FR

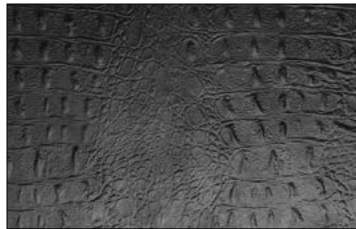


DM Gold FR

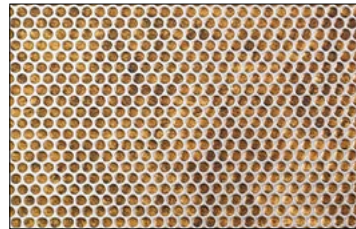
STRUCTURE-LINE *FLAME RETARDANT COLLECTION*



SL LOTUS CLASSY Black FR
2600 x 1000 / **NA** 27628 / **SA** 27642



SL CROCO CLASSY Black FR
2600 x 1000 / **NA** 27629 / **SA** 27643



SL RACE VINTAGE Copper/Silver FR
2600 x 1000 / **NA** 27630 / **SA** 27644

DECO-LINE DISPLAY *FLAME RETARDANT COLLECTION*



DM Brown AR FR
2600 x 1000 / **NA** 17700 / **SA** 27588



DM Rosegold AR FR
2600 x 1000 / **NA** 24672 / **SA** 24673



DM Gold AR FR
2600 x 1000 / **NA** 12014 / **SA** 25867



DM Brass AR FR
2600 x 1000 / **NA** 10140 / **SA** 26678



DM Anthracite AR FR
2600 x 1000 / **NA** 10127 / **SA** 22263



DM Iceblue AR FR
2600 x 1000 / **NA** 24123 / **SA** 25942



DM Fashion Gold AR FR
2600 x 1000 / **NA** 26295 / **SA** 26296



DM Fashion Grey AR FR
2600 x 1000 / **NA** 14316 / **SA** 18137



DM Fashion Red AR FR
2600 x 1000 / **NA** 25954 / **SA** 25955



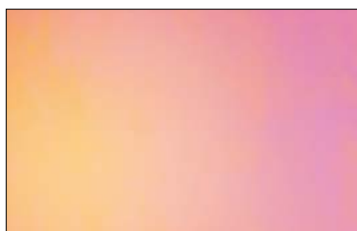
DM Bronze FR
2600 x 1000 / **NA** 17701 / **SA** 27587



DM Gold FR
2600 x 1000 / **NA** 25225 / **SA** 26665



DM Silver FR
2600 x 1000 / **NA** 10371 / **SA** 18135



DM Hollywood FR
2600 x 1000 / **NA** 22617 / **SA** 22614



DM Hollywood Blue FR
2600 x 1000 / **NA** 26344 / **SA** 27594



DM Brass brushed matt AR FR
2600 x 1000 / **NA** 16261 / **SA** 22702



DM Copper brushed AR FR
2600 x 1000 / **NA** 17711 / **SA** 18155



DM Titan brushed AR FR
2600 x 1000 / **NA** 24224 / **SA** 18152



DM Champagne brushed AR FR
2600 x 1000 / **NA** 17709 / **SA** 18151



DM Silver brushed FR
2600 x 1000 / **NA** 12308 / **SA** 18149

DECO-LINE DECORATION *FLAME RETARDANT COLLECTION*



DM VINTAGE Copper FR
2600 x 1000 / NA 27647 / SA 27656



DM VINTAGE Silver FR
2600 x 1000 / NA 24827 / SA 24828



DM LUXURY Gold FR
2600 x 1000 / NA 21730 / SA 22550



DM LUXURY Bronze FR
2600 x 1000 / NA 27648 / SA 27651



DM CLASSY Black AR FR
2600 x 1000 / NA 22404 / SA 27652



DM OXIDIZED Copper FR
2600 x 1000 / NA 27649 / SA 27653



DM CLASSY Gold FR
2600 x 1000 / NA 25826 / SA 27654



DM Smoke PF AR FR
2600 x 1000 / NA 27650 / SA 27655



DM Snow White matt FR
2600 x 1000 / NA 27658 / SA 27331

NA Nicht klebend
Non-adhesive

SA Selbstklebend
Self-adhesive

AR Abriebbeständig
Abrasion-resistant

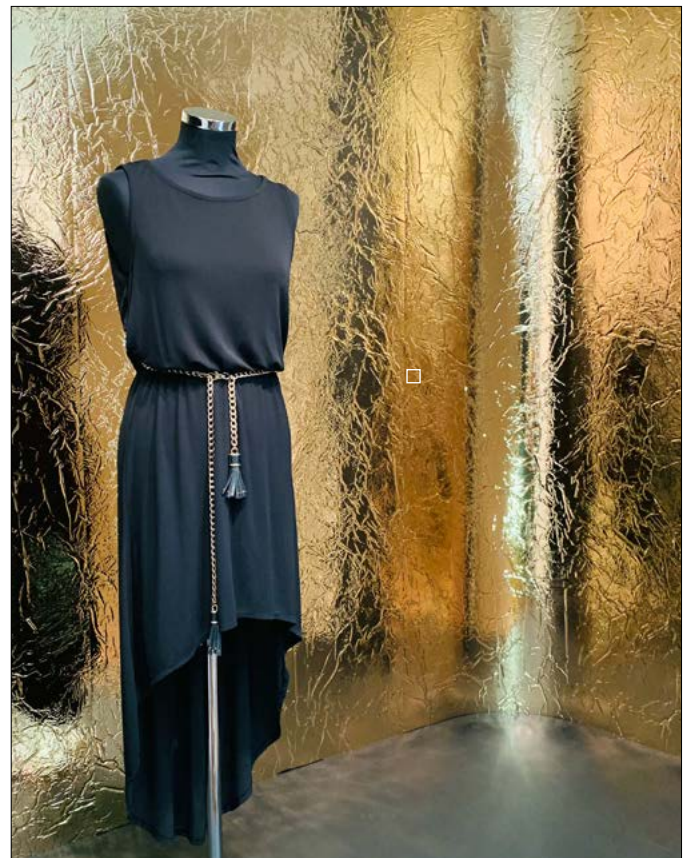
FR Schwer entflammbar
Flame retardant

i Detailliertere Infos dazu finden Sie auf www.sibu.at
More detailed information on www.sibu.at

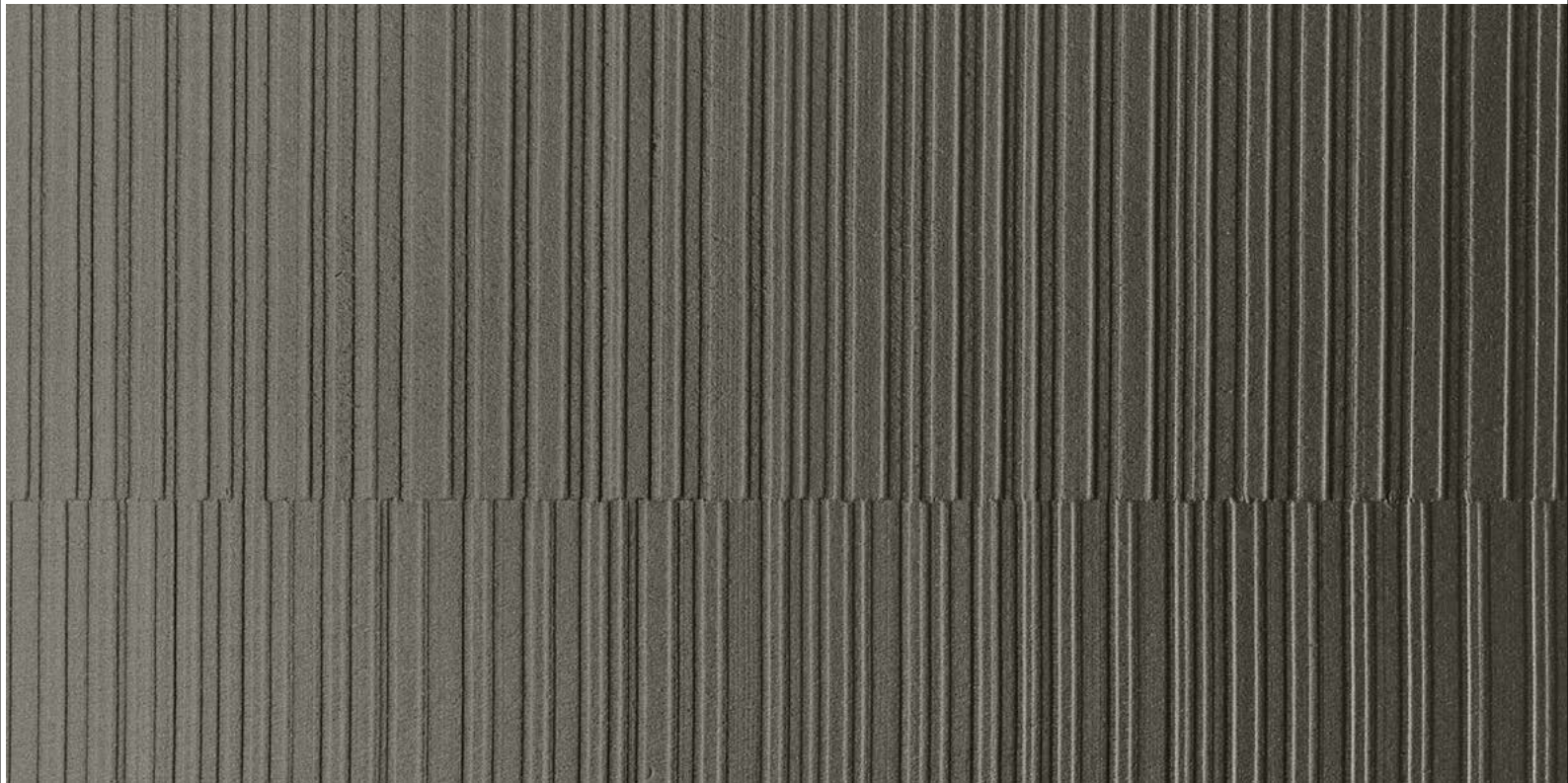
We create ambience.



□ DM Smoke PF AR FR



□ SL CREPA Gold FR



SIBU | DESIGN

SIBU DESIGN GmbH & Co KG
Jupiterstraße 8 / 4452 Ternberg / Austria
T: +43 (0) 7256.6025.0 / info@sibu.at / www.sibu.at